

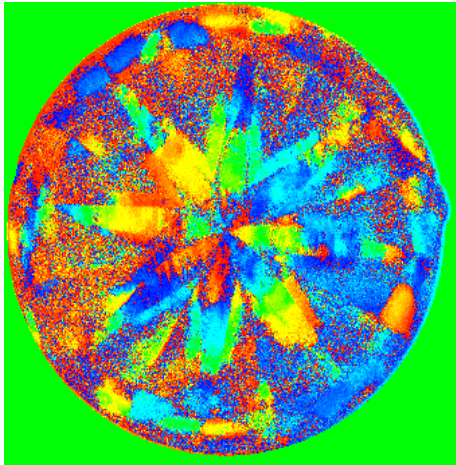
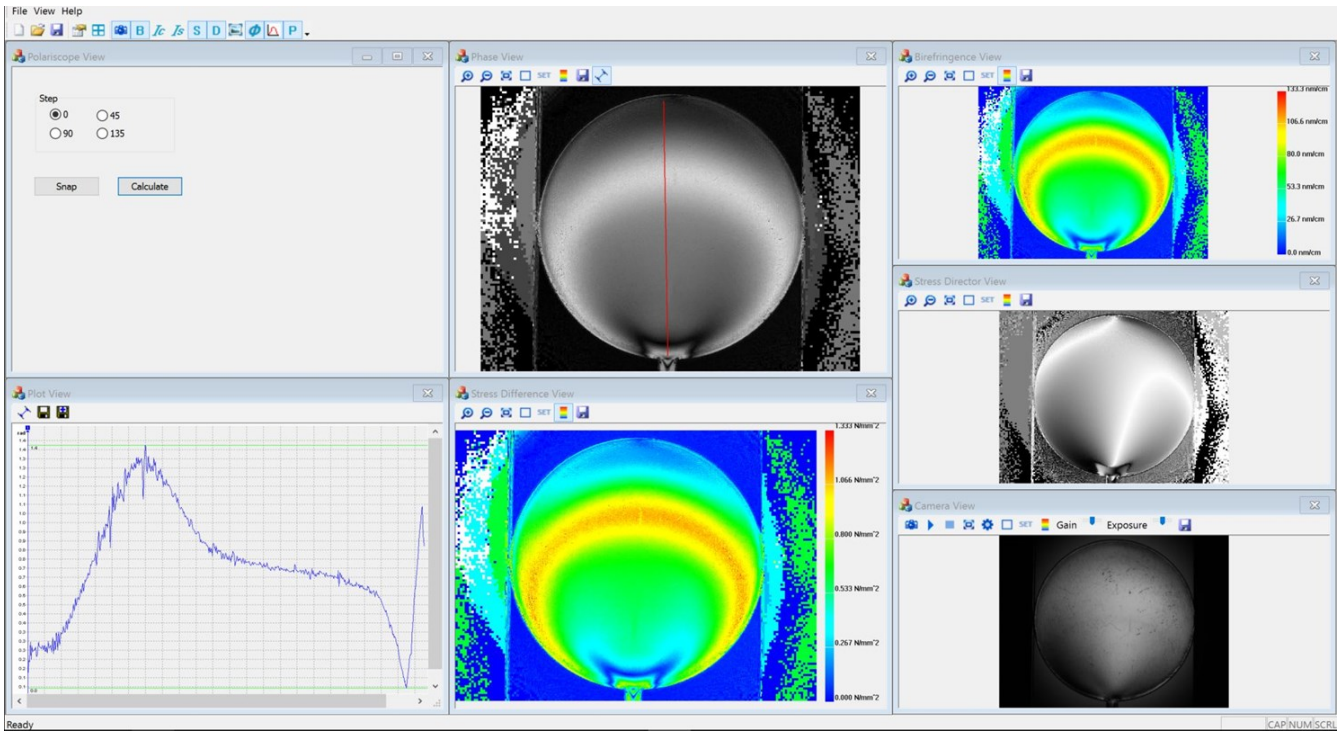
d'Optron

High-resolution, Whole field birefringence and stress measurement

Parameters	Specifications
Measurement	Polarisation angle ($^{\circ}$), normalized birefringence (nm.cm), retardation, integrated stress (MPa)
Birefringence	5nm/cm
Integrated Stress	1MPa (PMMA)
Illumination	LED
Field of view	8cm by 12cm (rectangle) 10cm \varnothing (round)

d'Optron
Dynamic vision of new Dimensions

Applications



- Stress and Defect Analysis
- Injection Moulded and 3D printed Component Inspection
- Optical Materials (Glass, Fused silica, diamonds and gemstones)
- Polymer materials (Plastivs, PMMA, COC, epoxy, etc)

d'optron
Dynamic vision of new Dimensions